

An aerial photograph of a city, likely Vancouver, with a dense urban area in the foreground and several prominent mountains in the background. The sky is a soft, hazy blue, suggesting a clear day. The city's buildings and green spaces are visible, though slightly out of focus compared to the mountains.

Youth Employment Stimulus Program

2020-2023

Prime Minister's Delivery Unit and Accountability Unit

November 10, 2020

Current Situation

- Youth Unemployment has fallen
 - 50% in 2000
 - 32.8% in 2020
- However, in COVID-19 era
 - Still one of highest in the world
 - Gains are being reversed in COVID-19 era due to lockdowns and economic recession
 - Absence of Unemployment Insurance and Social Protection for Youth
- Youth across all economic sectors affected
 - Youth in Informal Sector blocked by lockdown
 - Youth with low education have limited options
 - Semi-skilled youth whose decent jobs were lost in economic recession
 - University grads with dashed hopes (Skills Mismatch)

Youth Crisis Negative Implications for Material and Mental Well-Being

- Scarring in Later Life
 - Lower Pay
 - Higher Unemployment
 - Reduced Life Chances
- Poverty Traps
- Mental Health in Later Life
 - Loss of confidence
 - Reduced cognitive skill development
 - Reduced non-cognitive skills
 - Lower qualifications
- In the Short-Term, Frustration



Instability
Uprising
Crime

Program Objectives

Consolidation of Previous Interventions and related

- * Lesotho Youth Internship and Public Works initiative
- * Ministry of Forestry Environmental Management & Range Protection
- * World Bank Lesotho Start-Up Network (LSN)
- * AfDB Promoting Enterprise Development (PED)

Public and Civil Works Program

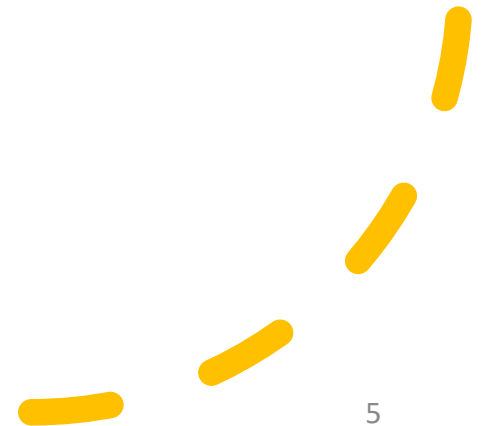
Apprenticeship Program

Business Development, Creativity and Innovation Projects Program

A large orange circle is positioned on the left side of the slide, partially cut off by the edge.

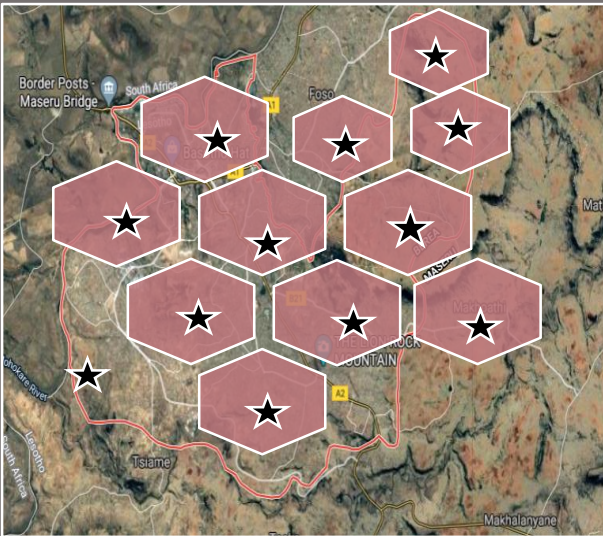
Public and Civil Works Program

- Community Centers: “15-minute neighborhood”
- Maseru Greenway Network Plan
- Environmental Protection
- Green and Climate Responsive Projects

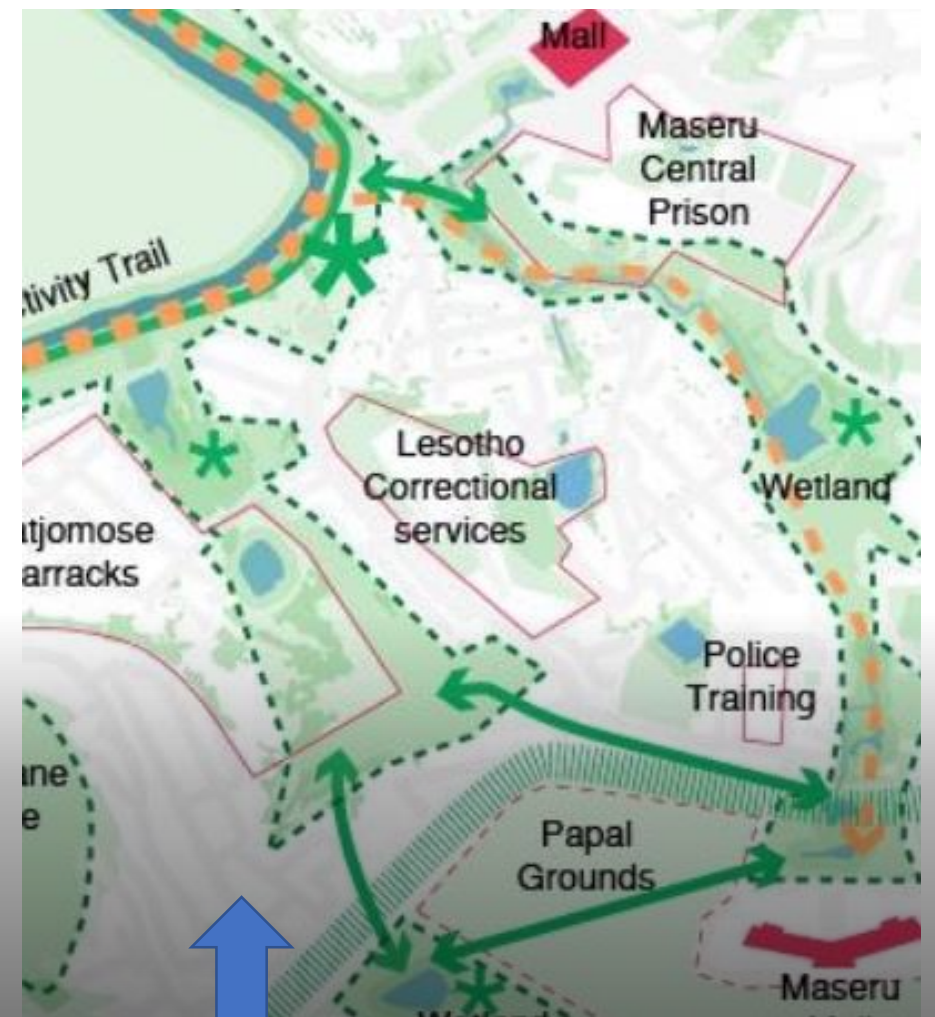


15-Minute Neighborhood Community Centers

Community and Social Development Interventions



- **Multi-use Community Centres** (15-minute neighbourhood core)
- **Youth Innovation and Business Development Hubs**
- **Local marketplaces** for local produce and value-added product sales.
- **Early Childhood Development Centres** (built and staffed by youth, with guidance from professional educators).
- **Primary level after-school childcare and children's sports/education/arts programs** (built and run by youth).
- **Local Health Clinics** (to address COVID-19 vaccinations and long-term treatment).
- **Affordable Housing** co-located nearby built by youth with youth driven material supply chain.



Maseru Greenway Network Plan



along the Lake



Pathway between purifying compartments



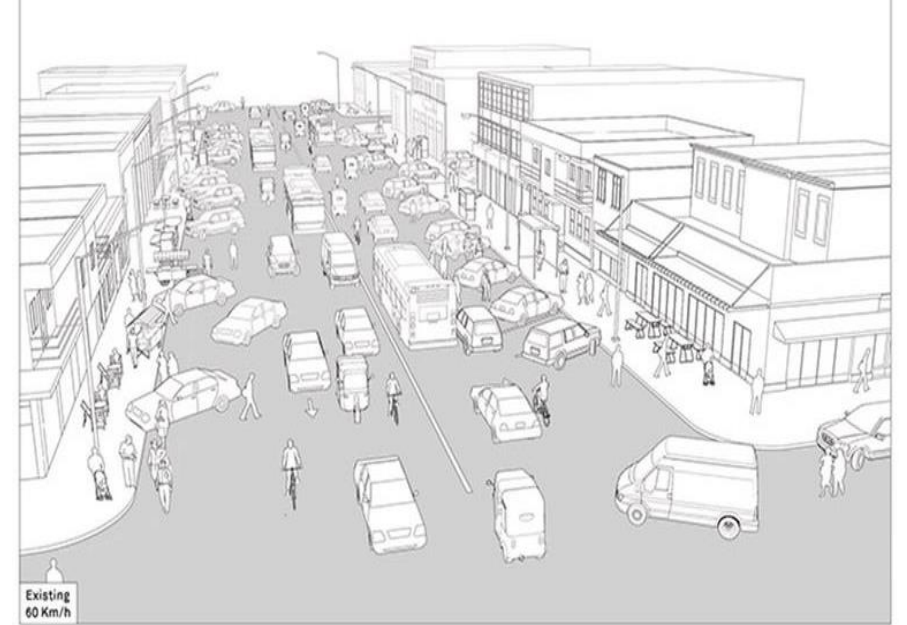
in compartments with nesting poles



Bridge with fish pattern

Streetscapes, Bridges and Walk/Bikeways

- Trails & Bridges for Walking and Biking
- Rural to Urban network





Adjacent to Kofi Annan Blvd

Walkway, Bikeway, Tree-planting, Street Furniture



Neighborhood Walkway

Permeable Paving, Landscaping for Shade, Benches for Resting
Adjacent to Affordable Housing



River Trail

- Ecotourism
- Sports and Fitness Trail
- Relaxation and Health Facilities



River Trail Parcourse



Restoration of Deteriorating and Unsustainable Landscapes

Malealea Gully Rehabilitation Success Story



Environmental Rehabilitation, Protection and Resilience Projects

- a) Rehabilitation of gullies in the rural areas
- b) Clean-up of waste dumps
- c) Drainage & green infrastructure in urban areas
- d) Invasive species removal, wetland rehabilitation and other conservation works.
- e) Tree planting program for conservation and food production. (Both public works and business ventures).
- f) Urban agriculture including vertical farming





Cleanup of Waste Dumps

- Sports and Community Facilities



Rehabilitation of Wetlands

- Ecotourism and Green Network
- Biodiversity
- Natural Assets add value to property and country



Cleanup of Watercourses

- Upstream Conservation
- Relocate Sanitary/Polluting Uses
- Create Sports and Community Facilities

Allied Programming

- Located in Distributed Community Centers/Innovation Hubs
 - Satellite Programs that reach out
- Apprentice Program
 - To Trades, TVET, Construction Industries and others
- Business development
 - Business Incubators and Innovation Hubs at the neighbourhood scale.
 - IT centers
 - Local product production facilities (micro factories and workshops, ateliers)
 - Markets and Street Vendors infrastructure solutions (water, sanitation, storage)

Green Public Private Investment, Industry & Supply Chain Solutions

- * Tree and Plant farms
- * Wind and Solar
- * Waste sorting centres, recycling, sorting at source
- * Community Waste Management
- * Paving & Construction Materials
- * Urban/vertical Agriculture
- * Rainwater Harvesting



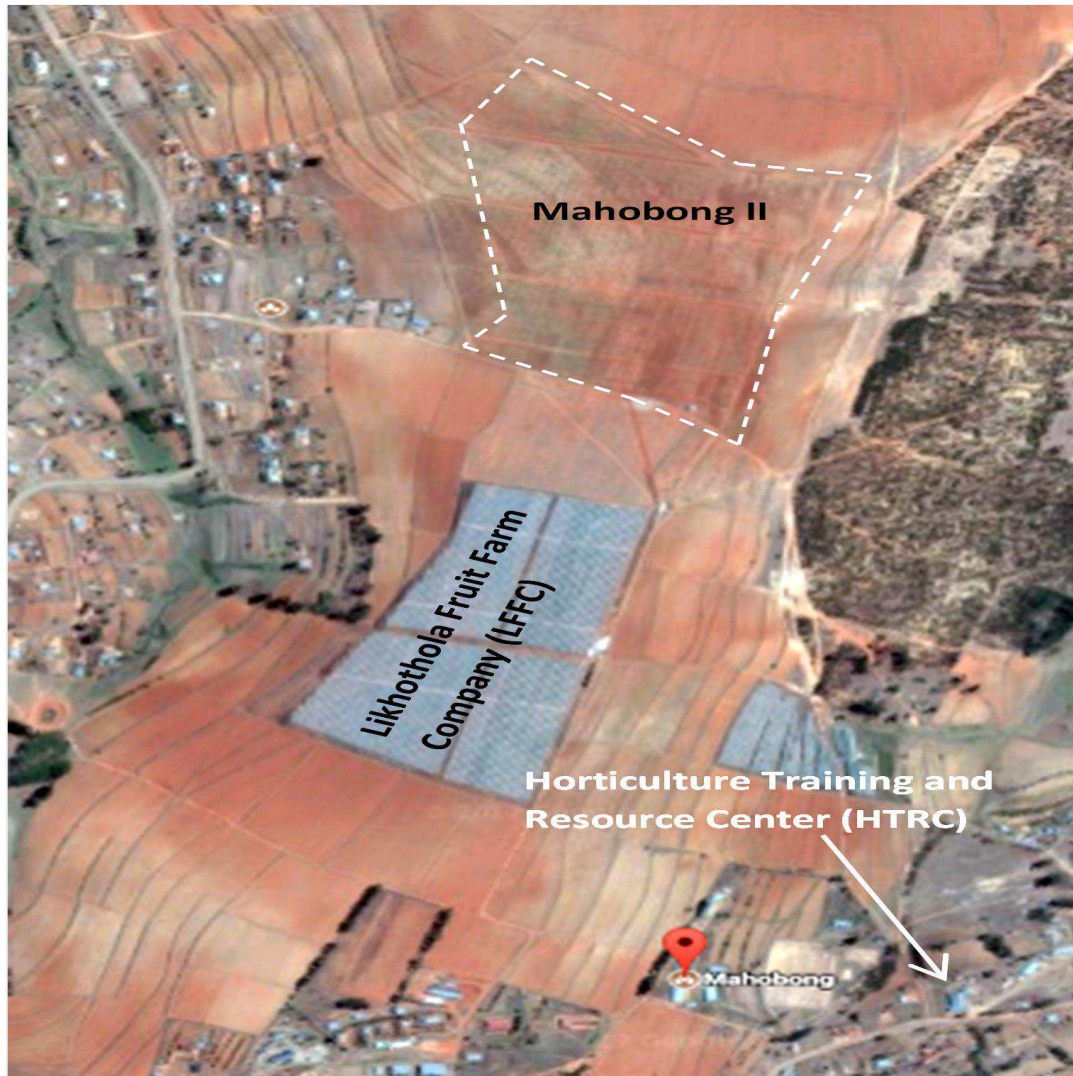




Example of
Successful
Rural Projects
with potential
for scaling up

Potential Incubation Projects for Youth

Mahobong/Thuathe/Qoqolosing/Likhetlane/Tlokoeng



Can serve as
incubators for
future expansion



Implementation Arrangements

Institutional



Proposed Program Governance

Public Private Partnerships
Youth Leadership and Inspiration
Tripartite Organization
All Relevant Ministries/Agencies
Development Partners
NGOs, Corporates, Individuals

Targeted Youth Participants

- 200,000 (Both graduates and non-graduates over a period of three years)

The existing program has enrolled:

- 431 graduates placed in various companies
- 986 non-graduates placed in various constituencies.

THANK YOU

Prime Minister's Delivery Unit and Accountability Unit
November 10, 2020